

Frequently Asked Questions

Rev A

For Series: **EQRG22**

1. What is this oscillator series?

This series of devices are oscillators where the output frequency is primarily controlled by an internal quartz bulk acoustic wave (BAW) crystal resonator and integrated high speed steering logic (HCSL) oscillator circuit. Utilizing a proprietary crystal resonator design and exclusive oscillator design techniques, this series of oscillators is calibrated to a specified frequency prior to shipment to the customer.

2. What are the typical customer circuit applications for this oscillator series?

This oscillator series can be used in any of the following applications:

- Clock Recovery
- Phase-Locked Loop and Frequency Synthesis
- Synthesizer or System Reference
- Clock Distribution
- Digital Switching Networks
- Clock Translation and Multiplexing

3. What are the typical applications and end item products for this series?

Here is a list of the common applications and products:

- PCI Express
- Gigabit Ethernet
- Fiber Channel
- SATA/SAS
- FBDIMM, DDR, SONET, ATM, SDH
- Routers, Servers, Hubs, and Network Switches
- High Resolution Video and Set-top Boxes
- Scanners, Printers, Modems
- LCD Displays and HDTV
- Interface Controllers
- Medical Equipment
- PDAs and Portable Media Players
- Notebook Computers
- Video Cameras and Video Recorders
- Portable Devices
- Computer Peripherals and Networking Products

4. What technical benefits does this product series offer?

This series of crystal oscillator offers:

- Improved frequency stability through the use of a bulk acoustic wave (BAW) quartz crystal resonator
- Use of a fundamental or third overtone mode oscillator application specific integrated circuit (ASIC) design
- Commercial, extended commercial, and industrial operating temperature range options
- Pad 1 or pad 2 Standby (Tri-state, High Impedance) output options
- Low stand-by current
- HCSL output with fast rise and fall times
- Complementary output
- Superior rms phase jitter and phase noise performance
- Tight duty cycle
- Industry standard moisture sensitivity level one (MSL1) rated ceramic six pad SMD package
- RoHS Compliant (Pb-free) with high temperature 260°C reflow capability

5. What are the construction characteristics of this product series?

This series consists of a single application specific integrated circuit (ASIC) and a BAW quartz crystal packaged inside a hermetically sealed ceramic leadless SMD package. The leadless SMD package has six gold plated contact I/O pads. The package has a seam sealed metal cover that is case grounded for improved EMI performance.

6. What is the input supply voltage for this product series?

The nominal supply voltage and tolerance is provided on the datasheet.

7. What are the input current specifications for this product series?

The input current specification is listed in milliamps as a maximum value and is provided on the datasheet.

8. How do I specify the overall frequency stability for this product series?

Ecliptek defines the frequency stability performance of the device inclusive of specific oscillator operating conditions. Ecliptek specifies the following inclusive parameters for this series of product:

- Calibration Frequency Tolerance at 25°C
- Frequency Stability over Operating Temperature Range
- Supply Voltage
- Output Load
- First Year Aging at 25°C
- Shock and Vibration

9. What are the frequency stability and operating temperature range options for this product series?

The available operating temperature range and frequency stability options can be found on the datasheet.

10. Does this series offer a Standby (Tri-state, High Impedance) output function?

This product series offers a Standby (Tri-state, High Impedance) output function to facilitate the customer's use of in-process assembly testing. It features a control function where the output is three-stated (tri-state condition) when the voltage at the control pad (pad one or two) is set to a logic low state. In this condition, the output signal is three-stated (tri-state). The oscillator output gate becomes high impedance and the oscillator input current on the power supply line is negligible.

If the voltage at the control pad is set to no connect or a logic high state, the output is enabled (clocking).

Note: The oscillator has an internal pull up resistor on the control pad. The datasheet provides the V_{IH} and V_{IL} thresholds for the control pad.

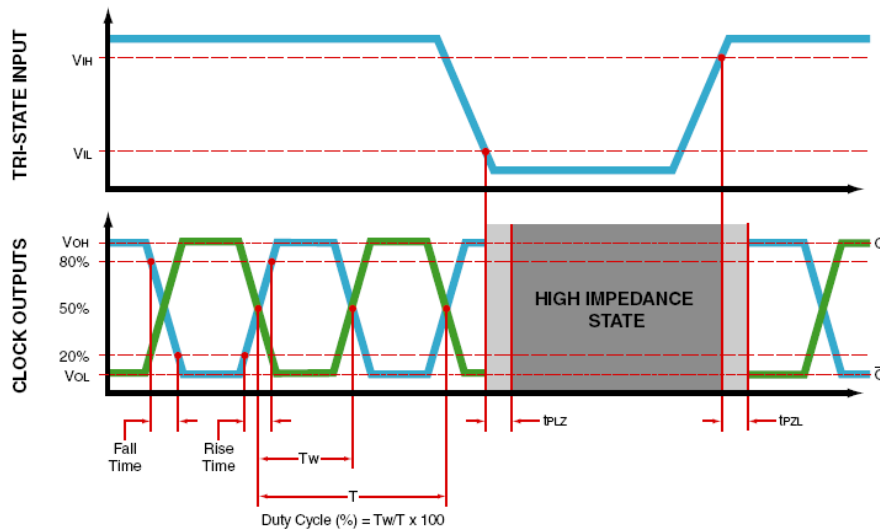


Figure: Tri-State Timing Diagram

When entering the tri-state mode, the time from when the oscillator input control pad reaches V_{IL} and the oscillator output pad becomes high impedance is called Standby Output Disable Time and is shown as t_{PLZ} . When exiting the tri-state mode, the time from when the oscillator input control pad reaches V_{OH} and the oscillator output pad begins clocking is called Standby Output Enable Time and is shown as t_{PZL} .

11. Does this series offer a stand-by function?

This oscillator series contains a stand-by function for power management. All active circuitry within the oscillator is shut down when the voltage at the control pad is set to a logic low state. In this condition, the output signal is three-stated (tri-state). The oscillator output gate becomes high impedance and the oscillator input current on the power supply line is negligible. The maximum stand-by current is listed on the datasheet.

12. What is the function of the complementary output on pad five of the oscillator?

The term complementary output, often called a differential pair, is when one output signal is the logical opposite (complement) of the other output signal. Thus, when the output (pad four) of the oscillator is in a logic high state, the complementary output (pad five) of the oscillator is in a logic low state.

13. Can I obtain a non-tri-state function for this product series?

This product series only offers a Standby (Tri-state, High Impedance) output option on pad one or pad two of the oscillator. The customer can use this oscillator series as a non-tri-state oscillator by setting the voltage on standby control pad to either no connect or logic high. The oscillator has an internal pull up resistor on this pad. The datasheet provides the V_{IH} and V_{IL} thresholds for control of the Standby (Tri-state, High Impedance) output function.

14. What is oscillator aging and what are the aging specifications for this product series?

Aging is the systematic change in frequency with time due to internal changes in the crystal and/or oscillator. Aging is often expressed as a maximum value in parts per million per year [ppm/year]. The rate of aging is logarithmic in nature. The following factors effect oscillator aging: adsorption and desorption of contamination on the surfaces of the quartz, stress relief of the mounting and bonding structures, material outgassing, and seal integrity. The oscillator aging specification is listed on the datasheet.

15. What are the period jitter, phase noise, and phase jitter specifications for this product series?

Period Jitter is a time domain measurement and is specified in picoseconds (pSec) as a maximum value. Phase noise is a frequency domain measurement and is specified in decibels at various offset points from the carrier (-dBc/Hz). Phase jitter, (often called offset jitter) is derived from the phase noise measurement of the spectral density over a given offset bandwidth. Ecliptek uses a proprietary design, exclusive processing methods, and a unique ASIC output driver circuit enabling this product series to have exceptionally low period jitter, rms phase jitter, and phase noise. The period jitter, phase noise, and rms phase jitter specifications can be found on the datasheet.

16. What is duty cycle and what is the duty cycle specification for this product series?

Duty cycle is the measure of output waveform uniformity. This term, also referred to as symmetry, is a measurement of the time that the output waveform is in a logic high state, expressed as a percentage (%) of the clock period. This parameter is measured at a specified voltage threshold or at a percentage of the output waveform amplitude. See the datasheet for measurement thresholds and load conditions.

17. What are the output and output load characteristics for this product series?

Ecliptek offers this product series with a high-speed current steering logic (HCSL) output. The oscillator output topology utilizes a constant current source that allows the end user to configure their output termination so as to optimize circuit load matching and signal performance. Signal integrity is optimized when the low impedance output of the oscillator is driving a fifty ohm transmission line. Thus, Ecliptek specifies a load termination of 50 ohms between the output and ground (as well as 50 ohms between the complementary output and ground). This load configuration assures that any signal being reflected from the load will be absorbed by the source. The output load specification is listed on the datasheet.

18. Is start-up time specified for this product series?

As shown in the figure below, start-up time is defined as the time (t_0) from when the power supply reaches its specified V_{IH} value to the time (t_1) the oscillator output signal amplitude reaches its steady state V_{OH} output logic high level and the output is within the specified frequency tolerance. Note: The complementary output waveform is not shown in the below figure.

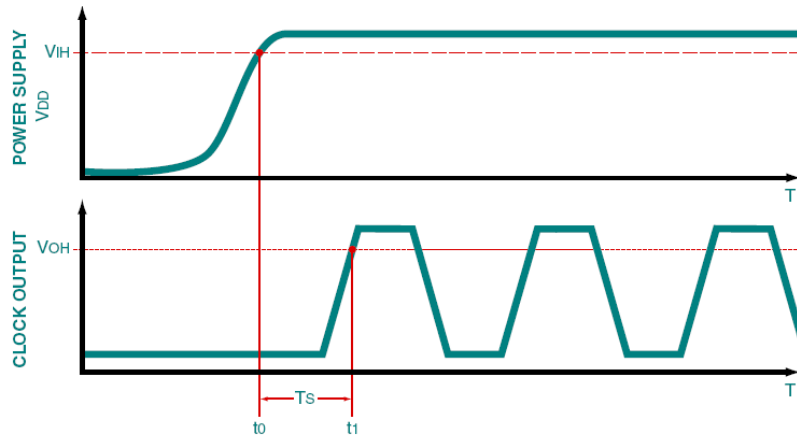


Figure: Oscillator Start-up Timing Diagram

In order to ensure proper start-up, the power supply start-up should have an exponential curve typical of a capacitive charge of a linear voltage ramp. The maximum start-up time specification can be found on the datasheet.

19. How do I electrically test this product series at my facility?

The recommended electrical test fixture can be found on the datasheet.

20. Is this product series compatible with my existing assembly process equipment?

If the part number is specified with the TR packaging option, oscillator products are delivered to the customer in EIA481 compliant tape and reel packaging. Without the TR option, products are delivered to the customer in bulk packaging as specified on the datasheet.

21. Is this product series compatible with my existing reflow processes?

This product series is capable of withstanding industry standard high temperature (260°C, 10 seconds) convection reflow processes and is rated MSL1 per J-STD-020. The suggested solder reflow diagram is provided on the datasheet.

22. Is this product series RoHS compliant and Pb-free?

This product is RoHS compliant and Pb-free as defined in the [Ecliptek RoHS Compliant \(Pb-free\) Roadmap](#).

23. How can I obtain a RoHS compliant (Pb-free) certification for this product series?

A RoHS and Pb-free product certification letter can be obtained directly from our website by using the [Ecliptek RoHS/Pb-Free Certification Letter Generator](#).

24. Is an IPC-1752 material declaration available for customer review?

Ecliptek can provide a [Material Declaration](#) in compliance with IPC-1752 to assist customers with their material compliance requirements.

25. How do I layout my printed circuit board for this product series?

A suggested solder pad layout is provided on the datasheet. The customer should layout their printed circuit board to include proper connections for the pad one or pad two Standby (Tri-state, High Impedance) output option and the complementary output (pad five). If the pad one Standby (Tri-state, High Impedance) output option is selected, pad two should be grounded or not connected. If the pad two Standby (Tri-state, High Impedance) output option is selected, pad one should be grounded or not connected.

26. Who do I contact if I have additional technical questions about the use of this product series?

The [Global Customer Support](#) team at Ecliptek can provide applications engineering support or answer customer technical questions.

27. How do I order an oscillator that has custom requirements not specified on the standard oscillator series specification sheet?

Please contact the Ecliptek [Global Customer Support](#) team for additional support or questions regarding your oscillator requirements.

28. What are the environmental and mechanical specifications for this product series?

The environmental and mechanical specifications for this product series are listed on the datasheet.

29. What reliability information is available for this product series?

Failure in Time (FIT) and Mean Time to Failure (MTTF) reliability data is available for this product series within the product series qualification and reliability report found on the series home page.

30. Is thermal resistance information available for this product series?

θ_{JA} and θ_{JC} values are available for this product series and can be found on the Environmental / Mechanical section of the series homepage.

31. What is the marking scheme for this product series?

As shown on the datasheet, this series of product has marking content on the top of the part. This marking consists of a pad one locator dot and additional lines of alpha numeric marking. The datasheet provides the marking content.

32. Can I identify the Ecliptek part number or specification based upon the markings on top of the part?

In order to protect our customer's intellectual property, the Ecliptek part marking does not identify the Ecliptek part number or specifications.

33. Where can I get the information regarding discontinued or End of Life (EOL) products?

Any Ecliptek part number currently under an End of Life statement will be identified as EOL on an Ecliptek quotation, along with a link to the EOL statement. This information can also be found on the [End of Life Statements for Discontinued and Obsolete Products](#) section of our website.

34. Is Ecliptek ISO 9000 Certified?

Yes, Ecliptek is certified to [ISO 9001](#).

35. How can I obtain a REACH compliance statement for this product series?

A Registration, Evaluation, Authorization, and Restriction of Chemicals (REACH) compliance statement can be obtained directly from our website by using the [Ecliptek REACH Compliance Resources](#) page of our website.

36. How can I obtain a Conflict Minerals Report for this product series?

A Conflict Minerals Reporting Template can be obtained directly from our website by using the [Ecliptek Conflict Minerals Compliance Resources](#) page of our website.